

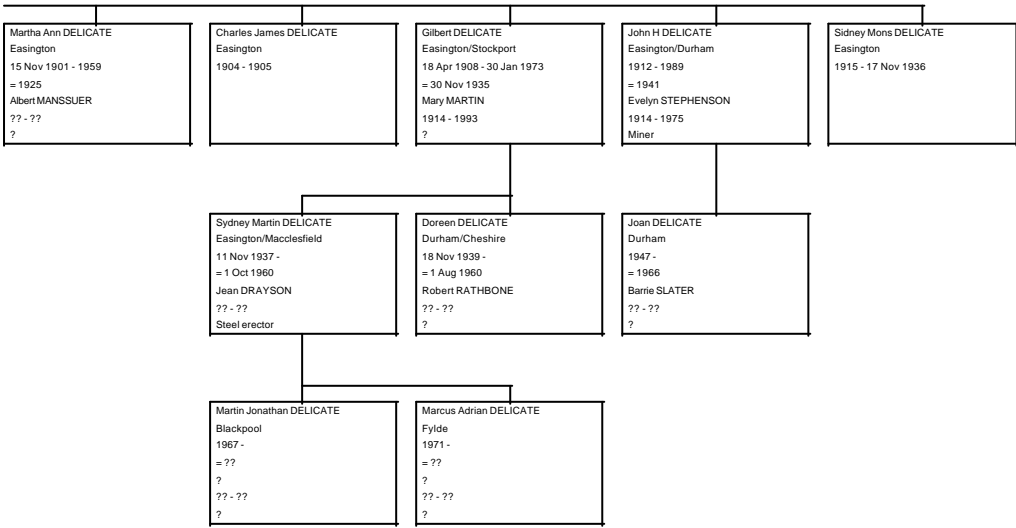
Simon DELICATE
?
c1650-60 - ??
= ??
?
?? - ??
?

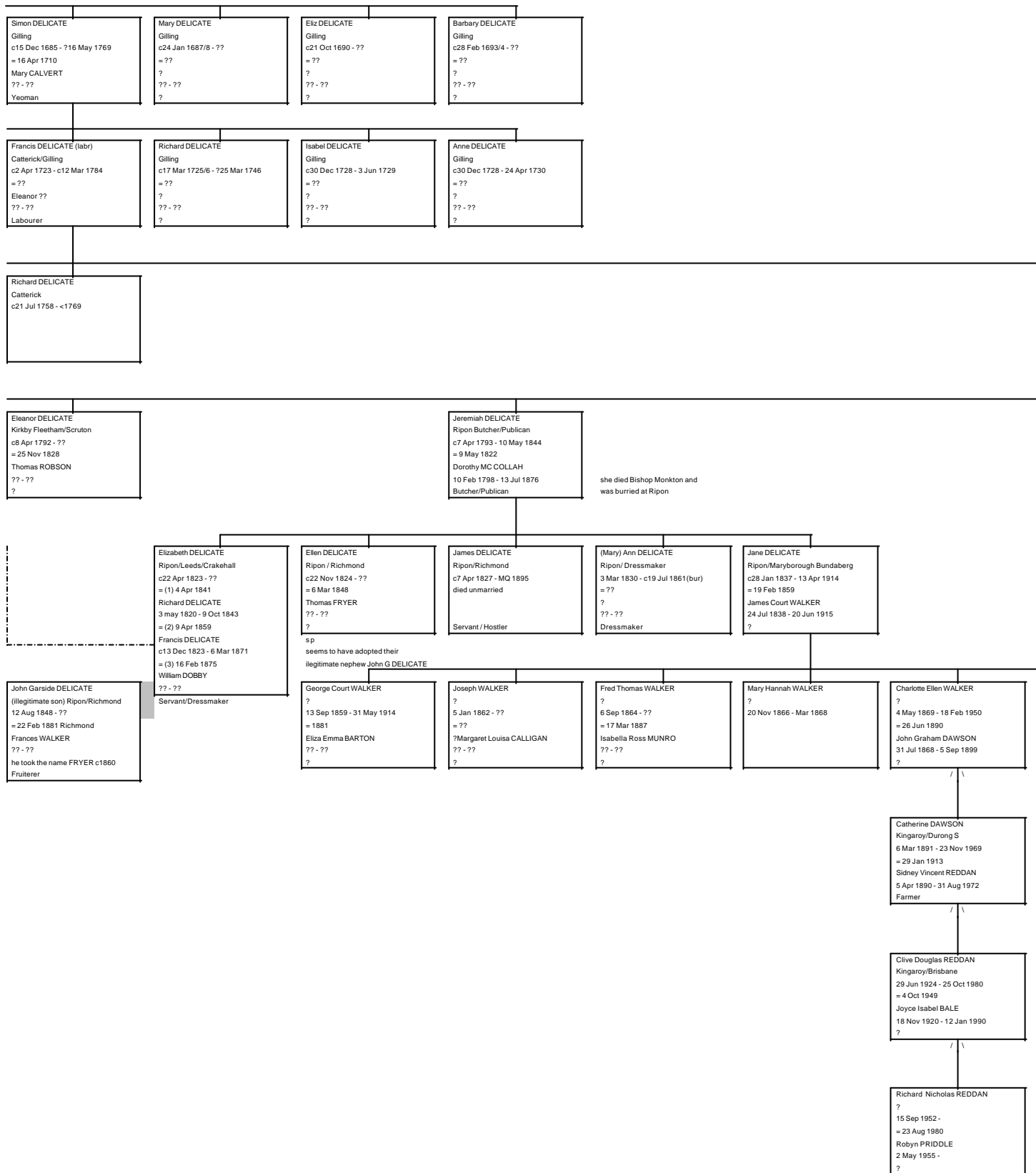
Richard DELICATE
Gilling
c4 Oct 1683 - ??
= ??
?
?? - ??
?

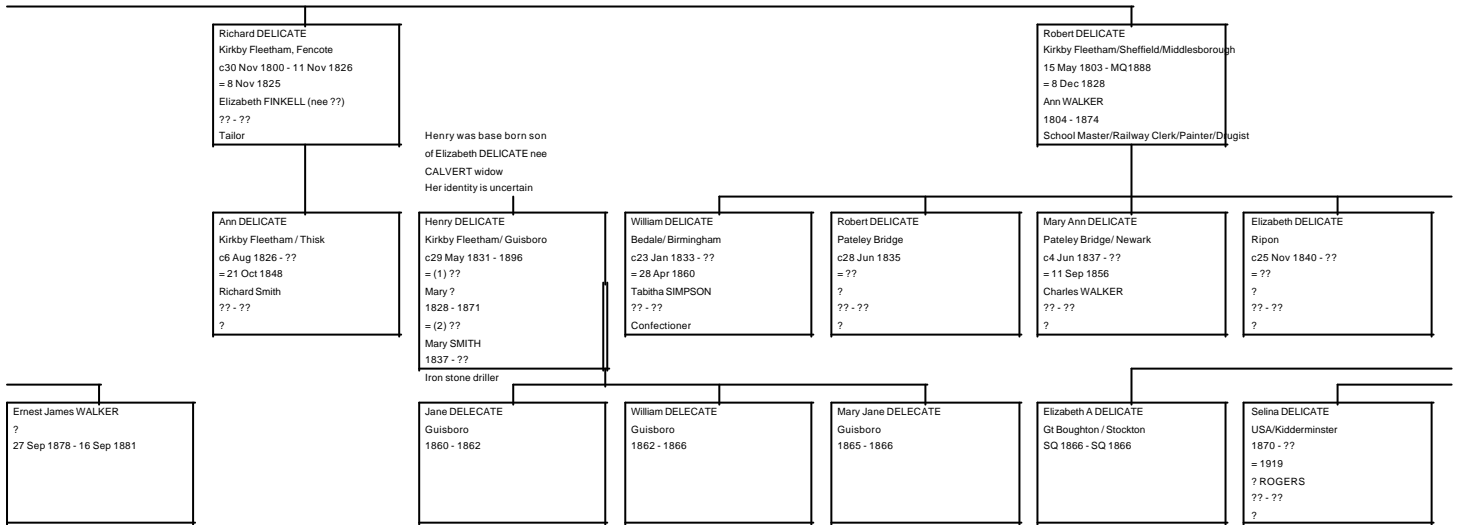
Francis DELICATE
Catterick Yeoman, bur Ripon
c17 Aug 1755 - 10 Jun 1835(bur)
= ??
?
?? - ??
Yeoman

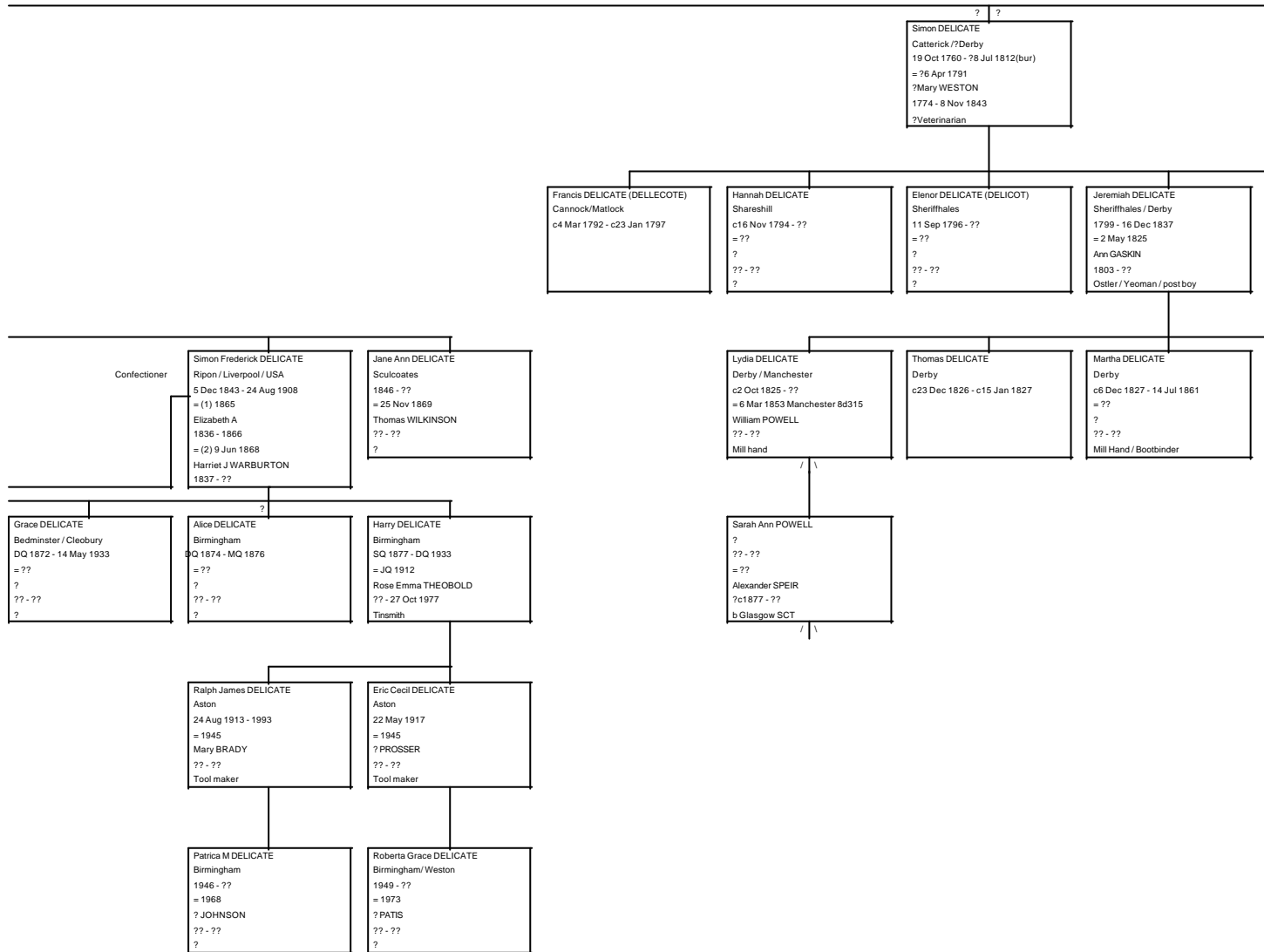
Francis DELICATE
Kirkby Fleetham
c9 Aug 1789
= ??
?
?? - ??
?

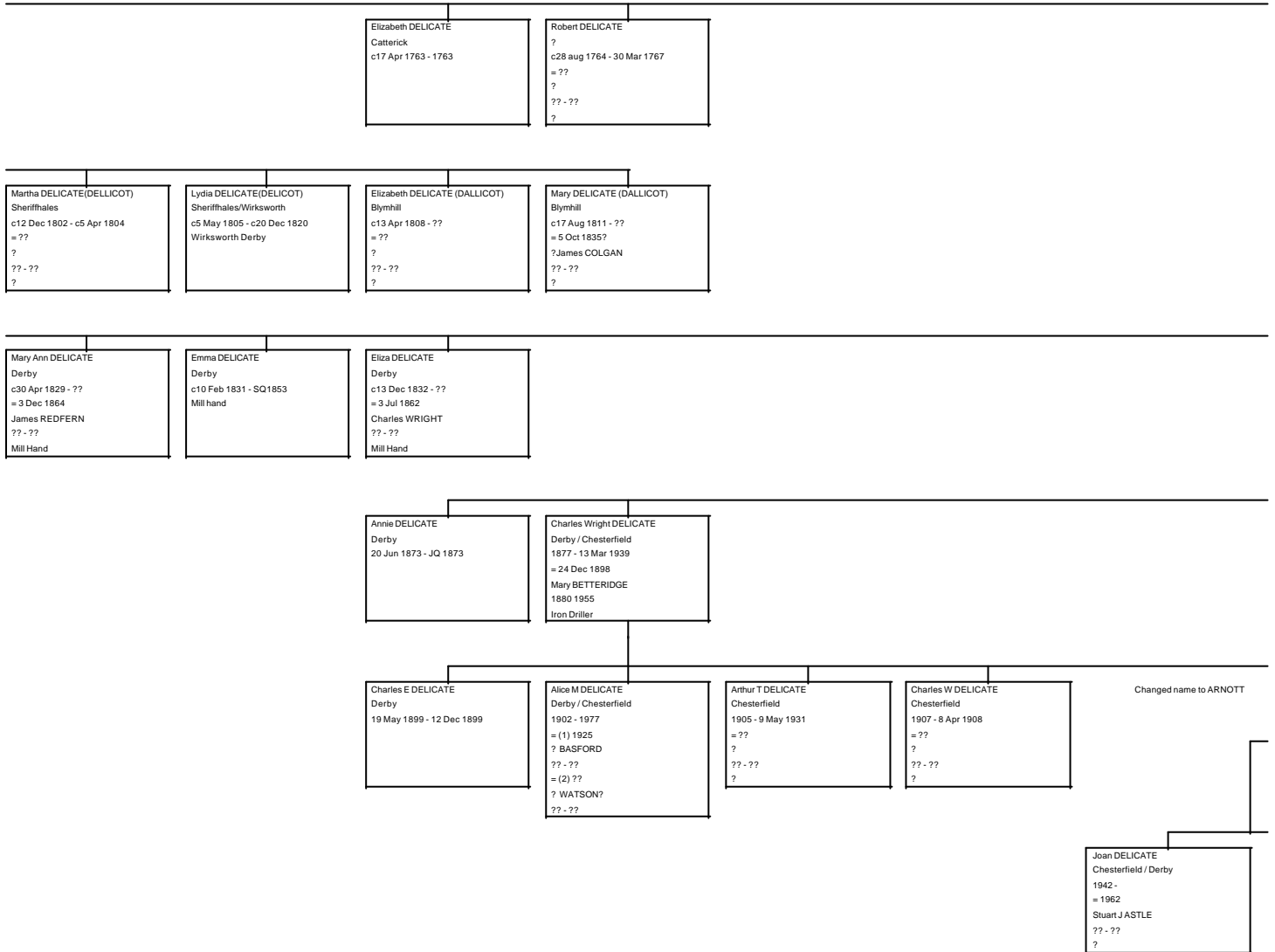
Francis DELICATE
illegitimate son/Scruton/Crakehall
c13 Dec 1823 - 6 Mar 1871
= 9 Apr 1859
Elizabeth DELICATE
c22 Apr 1823 - ??
Labourer











James W DELICATE (ARNOTT) Chesterfield / Derby 1909 - = (1) 1936 Beatrice METCALF 1913 - 1975 = (2) 21 Aug 1979 Mary RICHARDS 1916 -	Clara DELICATE Chesterfield 1910 - = 1929 ? HALL ?? - ?? ?	Mary E DELICATE Chesterfield 9 Jun 1912 - 1973 = 1932 George STEVENSON ?? - ?? ?	Constance M DELICATE Chesterfield 9 Jul 1915 - = 30 Aug 1937 ? BOWN ?? - ?? ?	Dora DELICATE Chesterfield 22 May 1917 - 7 Jan 1929	Harold G DELICATE Chesterfield 1919 - 1976 = 1950s Mary VERNON 1914 - 1991 Council worker Changed name to DERRICOTT	Winifred DELICATE Chesterfield 1922 - = 1943 ? HAMPSHIRE ?? - ?? ?	
<table border="1"> <tr> <td> Mavis DELICATE Chesterfield 1950 - = 1970 ? BRAILSFORD ?? - ?? ? </td> </tr> </table>	Mavis DELICATE Chesterfield 1950 - = 1970 ? BRAILSFORD ?? - ?? ?						
Mavis DELICATE Chesterfield 1950 - = 1970 ? BRAILSFORD ?? - ?? ?							

